

Health Care Cost Jeopardy

Kristie Robson, MD, MBA, FAAEM

Objectives

- Expose providers to the cost of delivering Military Medicine from medications, labs, surgeries, clinic visit costs, and radiology studies. Providers will have a better understanding of cost via an interactive Jeopardy format by the end of the lecture.
- Empower providers to know the role they play in driving up costs and the \$750 billion per year of unnecessary tests that are not making Americans healthier.
- Engage AMSUS participants in a challenging competition, that inspires discussion and better utilization of needed tests based on cost awareness.

Disclosure

Presenter has no interest to disclose.

AMSUS and ACE/PESG staff have no interest to disclose.

This continuing education activity is managed and accredited by Affinity CE/Professional Education Services Group (ACE/PESG) in cooperation with AMSUS. ACE/PESG, AMSUS, planning committee members and all accrediting organizations do not support or endorse any product or service mentioned in this activity.

Health Care Cost Jeopardy

Name that Med!	How Much is that "Lab" in the window?	Scalpel Please!	Hospital Celebrities	Famous Radiology Scans
<u>Q \$100</u>	<u>Q \$100</u>	<u>Q \$100</u>	<u>Q \$100</u>	<u>Q \$100</u>
<u>Q \$200</u>	<u>Q \$200</u>	<u>Q \$200</u>	<u>Q \$200</u>	<u>Q \$200</u>
<u>Q \$300</u>	<u>Q \$300</u>	<u>Q \$300</u>	<u>Q \$300</u>	<u>Q \$300</u>
<u>Q \$400</u>	<u>Q \$400</u>	<u>Q \$400</u>	<u>Q \$400</u>	<u>Q \$400</u>
<u>Q \$500</u>	<u>Q \$500</u>	<u>Q \$500</u>	<u>Q \$500</u>	<u>Q \$500</u>

Final Jeopardy

\$100 Question from Name that Med!

This is the “go to” med for Fever in
all age groups!

(it can be given PO, PR, or IV)

\$100 Answer from from Name that Med!

Tylenol (acetaminophen)

30 day Oral supply is \$0.12

1 Per Rectum Tylenol \$0.25

1 vial of 1,000mg IV is \$12.28

\$200 Question from from Name
that Med!

When someone needs to be given fluids
for dehydration we give boluses of this?
(not blood)

\$200 Answer from from Name
that Med!

Normal Saline

\$1.54 per bag

\$300 Question from from Name that Med!

This med is given for blood clots and was
originally registered as a rodenticide in
the USA?

\$300 Answer from from Name
that Med!

Warfarin (Coumadin)- \$0.05 per tab

Rivaroxaban (Xarelto) cost- \$93.30
for 30 day supply

\$400 Question from from Name that Med!

This med is given by for reactions to
bee stings, peanut allergies, or other
allergens that cause anaphylaxis?

(hint- there was national outrage for increasing
the price of this life-saving med)

\$400 Answer from from Name that Med!

EPIPEN

Cost is \$136 for 2
pens



Price increased by 500% since
2009 (\$103) to 2016 (\$608)
civilian markets

\$500 Question from Name that Med!

This med is given for this:



\$500 Answer from from Name that Med!

Crotalidae Polyvalent Immune Fab (CroFab)

\$1,645 per vial

4-6 vials given until initial control of
envenomation, THEN

2 vial doses every 6 hours for up to 8 hours

\$19,740 per Snake Bite



\$100 Question from How Much is That “Lab” in the Window?

This lab is ordered to detect a wide range of disorders to include infection, anemia, leukemia, etc?

\$100 Answer from How Much is That “Lab” in the Window?

Complete Blood Count (CBC)
Cost is \$1.49

Now add... Lytes (\$1.55), LFTs (\$2.98), UA
(\$2.87)...Basic Abdom Set is \$8.89

Add Blood Cultures (\$7.00) and Lactate (\$0.70)

\$200 Question from How Much
is That “Lab” in the Window?

This test can rapidly tell you if your
“sore throat” is from a bacteria!

\$200 Answer from How Much is That “Lab” in the Window?

Rapid Strep (\$4.62)

NHCP ER runs about 30 a day and
Hospital clinics run another 30 a day

\$150 a day in sore throats!

\$300 Question from How Much is That “Lab” in the Window?

This lab is done rapidly and can tell
you if your Fever, Body Aches, Cough,
Fatigue, and Sore Throat are from this
virus!

\$300 Answer from How Much is That “Lab” in the Window?

Influenza
(Rapid Flu cost \$15.76)

San Diego County 2017-2017 Flu Season had 20,757
reported cases!

If you send a Respiratory Virus Panel
(\$101.27)

\$400 Question from How Much is That “Lab” in the Window?

This is not a “lab” but it does need to
be tested before giving it to someone
following Trauma

(hint: people donate it)

\$400 Answer from How Much is That “Lab” in the Window?

Units of Packed Red Blood Cells
(\$350-500)

Unit of Platelets
(\$1500)

Unit of FFP
(\$150)

Massive transfusion (>10 units PRBC, Platelets, and Plasma 1:1:1) Cost >\$20k

\$500 Question from How Much is That “Lab” in the Window?

This is a stool DNA test performed at
home with 92% sensitivity for colon
cancer

\$500 Answer from How Much is That “Lab” in the Window?

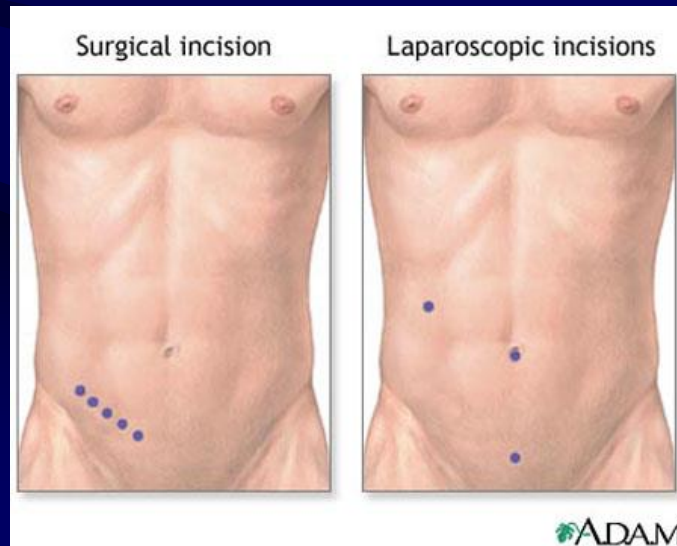
Cologuard/FIT-DNA (92% sensitivity)
Done every 3 years at a cost of \$350-400

Colonoscopy (gold standard >95% sensitivity)
Done every 10 years at a cost >\$950

Fecal Occult Blood Test (75% sensitivity)
Cost \$6.75

\$100 Question from Scalpel Please!

If you have pain in the Right Lower
Quadrant with Nausea, Anorexia,
and Fever



\$100 Answer from Scalpel Please!

Appendectomy (open)
\$2,706

Laparoscopy Appendectomy
\$1,748

\$200 Question from Scalpel
Please!

Two ways to bring a baby into the
world?

\$200 Answer from Scalpel Please!

Vaginal Delivery

\$4,041

Cesarean Delivery

\$4,032

\$300 Question from Scalpel Please!

If you have a bleed on your brain, you
are going to need to get this done?



**\$300 Answer from Scalpel
Please!**

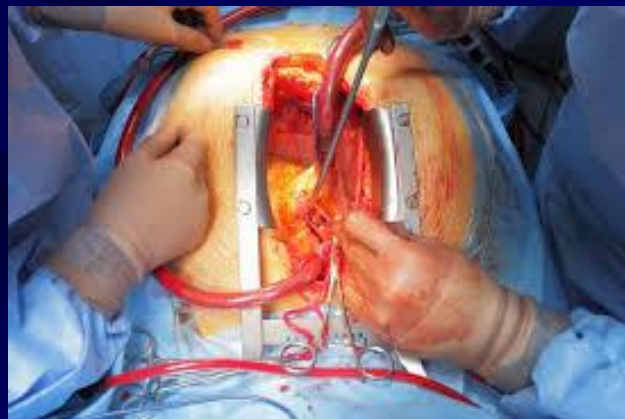
Craniotomy

**(will also accept anything close to draining
the skull by surgical means)**

\$6,115-12,470

\$400 Question from Scalpel Please!

If you need to unclog your
Heart by surgical means



\$400 Answer from Scalpel Please!

Cardiac Bypass Surgery (CABG)

One vessel- \$7,365

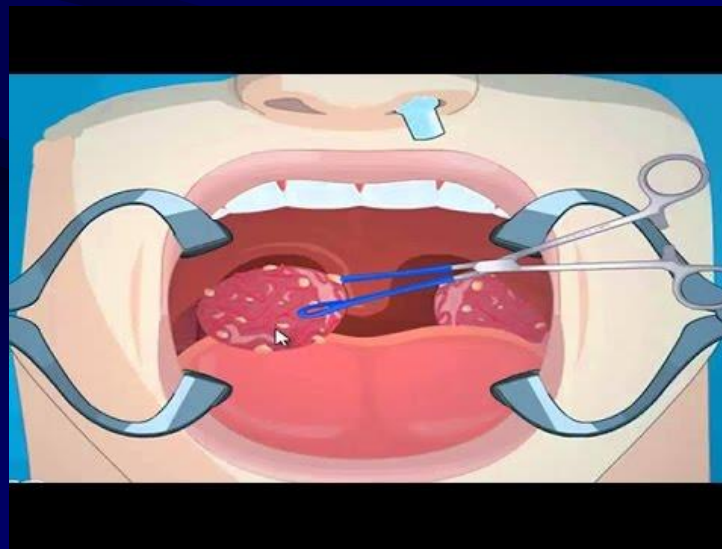
Two vessel- \$7,425

Three vessel- \$7,920

Four vessel- \$8,047

\$500 Question from Scalpel Please!?

Taking these out can help decrease
heavy snoring, sleep apnea, and
chronic infections



\$500 Answer from Scalpel
Please!

Tonsillectomy

\$316

\$100 Question from Hospital Celebrities

This doctor can help diagnose “heart”
aches

\$100 Answer from Hospital Celebrities

Cardiology!

Cost per visit at NHCP is \$450

\$200 Question from Hospital Celebrities

This doctor focuses on your Brain

*\$200 Answer from Hospital
Celebrities*

Neurology!

Cost per visit at NHCP is
\$315

\$300 Question from Hospital Celebrities

This doctor can scope you from
above and below!

\$300 Answer from Hospital Celebrities

Gastroenterology!

Cost per visit at NHCP is \$846

\$400 Question from Hospital Celebrities

This doctor cost significantly more to see in the hospital setting compared to the outpatient...best to keep your diabetes and blood pressure under control!

\$400 Answer from Hospital Celebrities

Internal Medicine

Inpatient cost per disposition is \$9,685

Outpatient cost per visit is \$676

\$500 Question from Hospital Celebrities

This doctor will help deliver your baby or
help with fibroids!

\$500 Answer from Hospital Celebrities

OB/GYN

Inpatient cost per disposition is \$8,880

Outpatient cost per visit is \$360

\$100 Question from Famous Radiology Scans

This x-ray can help diagnosis
Pneumonia and Pneumothorax

\$100 Answer from Famous Radiology Scans

What is a Chest X-ray!

\$44.58

\$200 Question from Famous Radiology Scans

If you are pregnant, you can get
this scan to “see” the baby and its
heart rate

\$200 Answer from Famous Radiology Scans

What is an OB Ultrasound (pelvic)

\$133.18

\$300 Question from Famous Radiology Scans

Women begin getting this cancer
screening exam in their 40's or younger
depending on FH

\$300 Answer from Famous Radiology Scans

What is a Mammogram!

\$146.74

\$400 Question from Famous Radiology Scans

This study is ordered to look at cartilage, tendons, and ligaments.

Hint- It will diagnose a ACL or meniscus tear!

\$400 Answer from Famous Radiology Scans

What is a MRI of the Knee

\$507

(NHCP does approx 10-12 a day
approx \$5k a day and \$155k per month)

Note MRI of Lumbar Spine- \$406

\$500 Question from Famous Radiology Scans

This scan is done to make sure that
there is no emboli on the lungs

\$500 Answer from Famous Radiology Scans

What is a CT Chest!

\$322

CT Head

w/o contrast \$114 w/ contrast \$121

Final Jeopardy

Cost of Medicine in the US



Final Jeopardy

Annual cost of the US Healthcare system is \$3.4 trillion.

How much money is wasted annually on excessive testing & treatment?

Final Jeopardy Answer

\$210 billion

(2012 Institute of Medicine Report)

This cost can also cause harm to patients by generating mistake and injuries leading to 30,000 deaths each year...you have 43% chance of undergoing a unnecessary medical test at your next doctor appt!

If you would like to receive continuing education credit for this activity, please visit:

<http://amsus.cds.pesgce.com>

**Hurry,
CE Certificates will only be
available for 30 DAYS
after this event!**